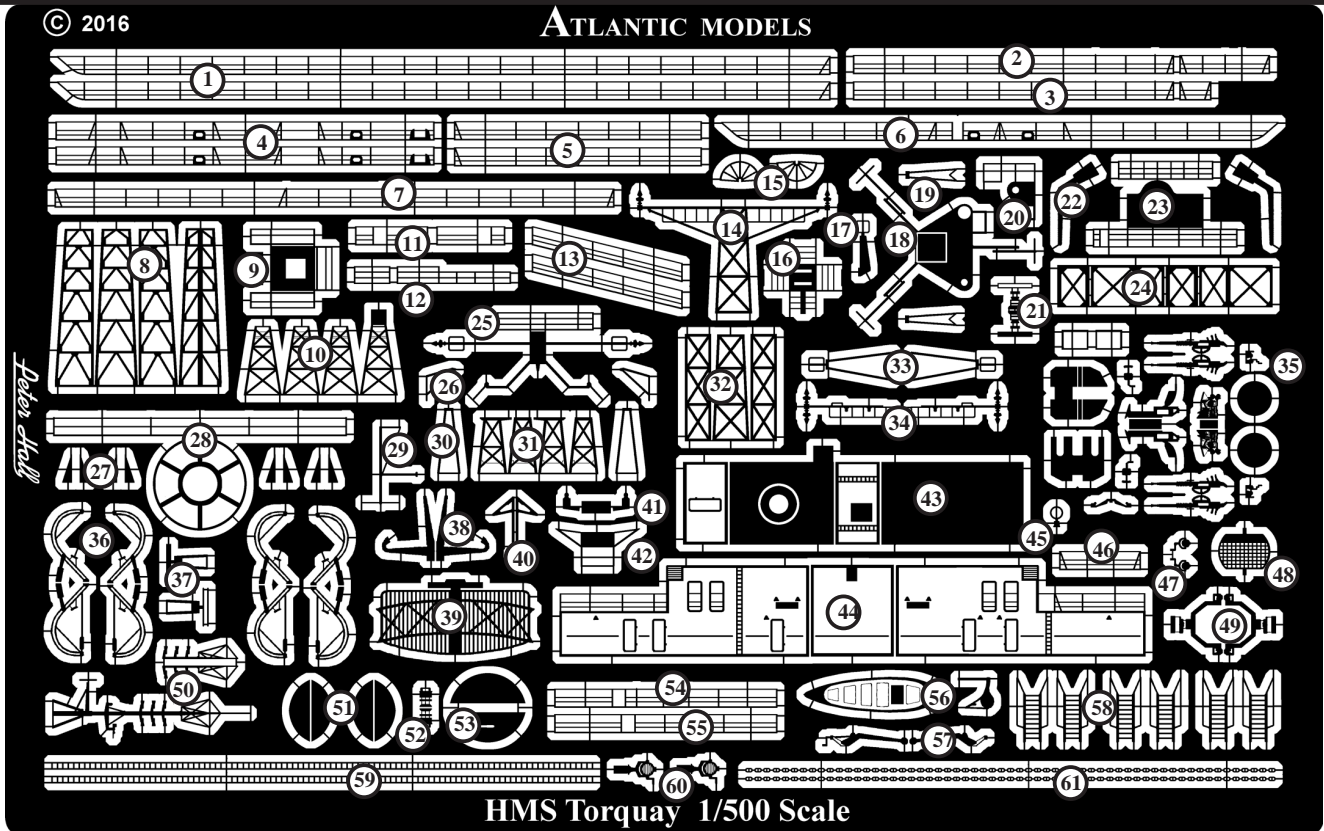


Parts List

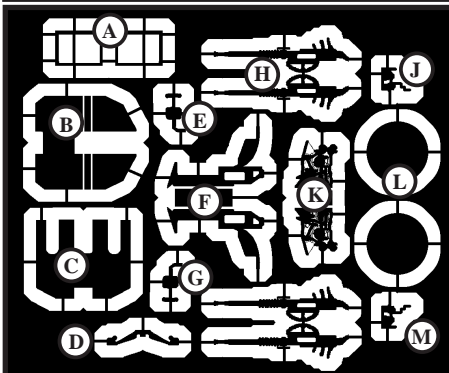


- | | | |
|--|--|---|
| 1. Railings (Main Deck) | 21. 274 Radar Antenna | 42. Fore Mast Fwd Platform |
| 2. Railings (Fwd Superstrect Stbd) | 22. Torpedo Loading Cranes | 43. Alternative Aft Superstructure Deck |
| 3. Railings (Fwd Superstrect Port) | 23. Auxiliary Conning Platform | 44. Alternative Aft Superstructure |
| 4. Railings (Focсле) | 24. Conning Platform Lattice | 45. Bridge Roof DF Antenna |
| 5. Railings (Fore Deck) | 25. Main Mast Platform (Late Fit) | 46. Alt Aft Superstructure Rear Railings |
| 6. Railings (Quarterdeck) | 26. Main Mast Rear Yard Supports | 47. Signal Lamps |
| 7. Railings (Mortar Well) | 27. Mk6 Director Platform Supports | 48. 277 Radar Antenna |
| 8. Lattice Fore Mast | 28. Mk6 Director Platform | 49. 277 Radar Antenna Mounting Yoke |
| 9. 277 Radar Platform | 29. Main Mast Rear Yardarm (EarlyFit) | 50. Fore Mast Top Antennas Array |
| 10. 277 Radar Mast | 30. Main Mast Yardarm Stays (Late Fit) | 51. 293 Radar Antenna Doubler Plates |
| 11. Railings (Superstructure Step Fwd) | 31. Lattice Main Mast (Late Fit) | 52. 293 Radar Antenna Mounting Pole |
| 12. Railings (Fore Mast Platform) | 32. Lattice Main Mast (Early Fit) | 53. 293 Radar Antenna Top & Bottom Plates |
| 13. Railings (Fore Deck Ramp) | 33. Fore Mast Yardarm Stays | 54. Aft Superstructure Top Railing (Port) |
| 14. Lattice Main Mast Rear (Early) | 34. Fore Mast Yardarms | 55. Aft Superstructure Top Railing (Stbd) |
| 15. Sword & Shiled Antennas | 35. Mk5 Twin Bofors Mounting | 56. 27' Whaler Fittings |
| 16. Main Mast Top Platform (Early) | 36. Boat Davits | 57. Aft Paravane Crane Jib |
| 17. DF Antenna | 37. Main Mast IFF Antenna | 58. Inclined Ladders |
| 18. Fore Mast Top Platform | 38. Signal LW02 Radar Dipole | 59. Vertical Ladder Stock |
| 19. Fore Mast Rear Yard Stays | 39. Signal LW02 Radar Antenna | 60. SearchLights |
| 20. Fore Mast 293 Antenna Platform | 40. Forward RAS Gantry | 61. Anchor Chain |
| | 41. Fore Mast Sensor Bracket | |

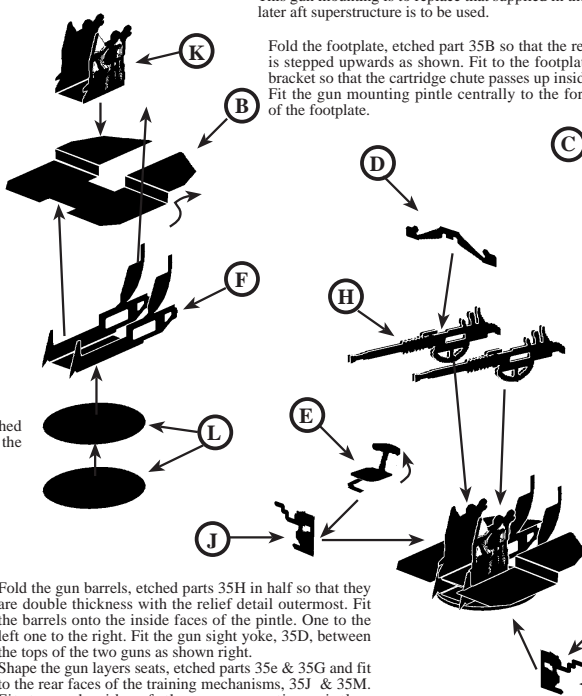
Tips and Hints when working with Photo Etched Metal

- Do not remove the etched parts from the fret until you are ready to use them.
- Before assembly, soak the etched parts in a suitable solvent, such as white spirit, to de-grease the surfaces for painting. It is recommended that the entire fret be primed with an acrylic automotive primer, such as Halfords Grey Primer before assembling any of the parts.
- Cyanoacrylate adhesive (Super glue) or contact adhesive such as a white PVA glue may be used. These can be applied with a pin or piece of stretched sprue.
- When removing parts from the fret, place the fret on a hard surface, such as a smooth ceramic tile, in order to prevent parts bending whilst cutting through the holding tabs. It is suggested that a No.10 rounded type of modelling knife blade is used for this purpose.
- When shaping or bending a part, a straight edged blade such as a chisel blade will give a good sharp corner, or alternatively an Atlantic Models Folding Tool ATT 01 or ATT 02 may be found to be useful
- If a part is bent incorrectly, lay it on a hard flat surface and roll it flat with a cylindrical object such as a modelling knife handle.

Mk5 Twin 40mm Bofors Mounting Assembly



35



This gun mounting is to replace that supplied in the kit when the alternative later aft superstructure is to be used.

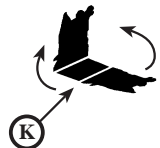
Fold the footplate, etched part 35B so that the rear section is stepped upwards as shown. Fit to the footplate support bracket so that the cartridge chute passes up inside the gap. Fit the gun mounting pintle centrally to the forward part of the footplate.

Fold the top section of the gun shield, etched part 35C so that it is angled rearwards, then fit the shield to the two forward edges of the gun mounting pintles. Shape and fit the railings, etched parts 35A, to the rear edges of the foot plate.

If the early Staag gun mounting as supplied in the kit is to be used, the gun barrels 35H may be used in the place of the plastic kit gun barrels. The mounting part will need to be modified to allow the etched parts to be located, by cutting away the centre section of the plastic moulding. Further research may be necessary if any further work is to be carried out on the Staag mounting to give more detail.

Laminate the two turntable discs, etched parts 35L together and fit centrally to the footplate support bracket.

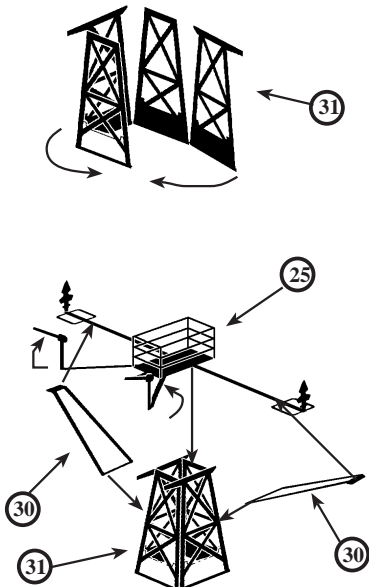
Fold the gun barrels, etched parts 35H in half so that they are double thickness with the relief detail outermost. Fit the barrels onto the inside faces of the pintle. One to the left one to the right. Fit the gun sight yoke, 35D, between the tops of the two guns as shown right. Shape the gun layers seats, etched parts 35e & 35G and fit to the rear faces of the training mechanisms, 35J & 35M. Fit to each side of the gun mounting pintles.



Fold up the sides of the gun pintle and the footplate support bracket, etched parts 35K and 35F, to 90° so that they are parallel.

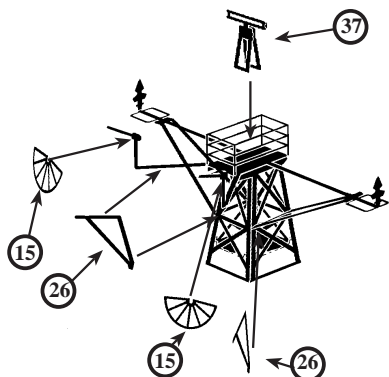
Late Main Mast Assembly

Fold the main mast lattice panels around in stages of 90° then bring the edges together and secure into place.



Fit the mast platform, etched part 25, to the top edges of the lattice mast as shown. Twist the upright Sword and Shield Antenna poles around to 90° on the rear quarter yards. Fit the shielded antennas as shown below.

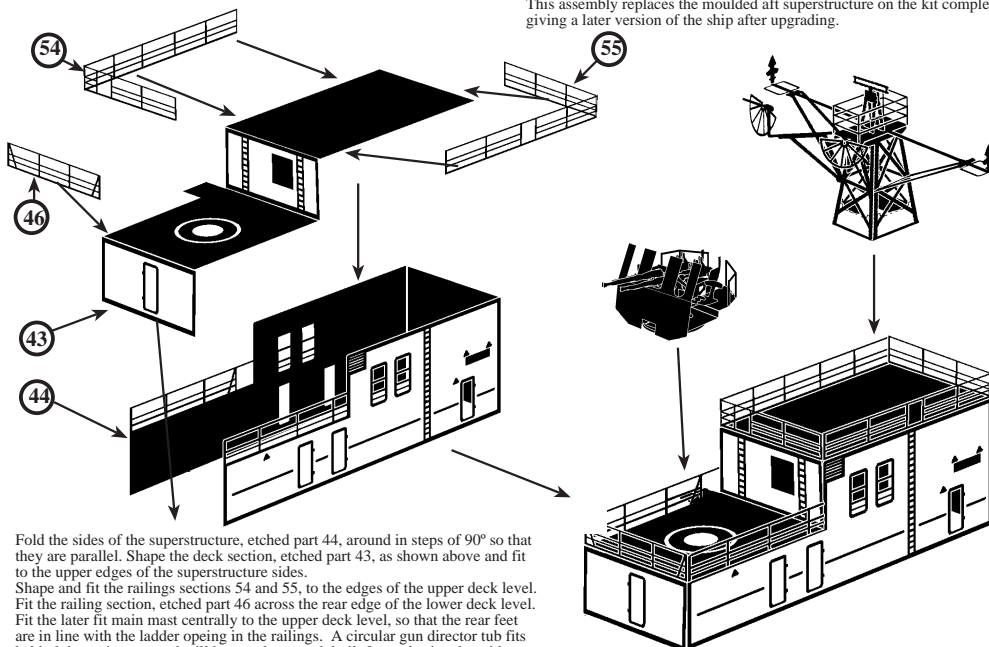
Fold up the cone antennas on the ends of the side yardarms up to 90° then fit the yardarm stays, etched parts 30.



Fit the rear quarter yardarm stays, etched parts 26, to the underside of the rear yardarms, making sure that the feet of the stays locates onto the lower corners of the mast at the first horizontal bar. Fit the IFF Antenna, etched part 37, onto the mast platform.

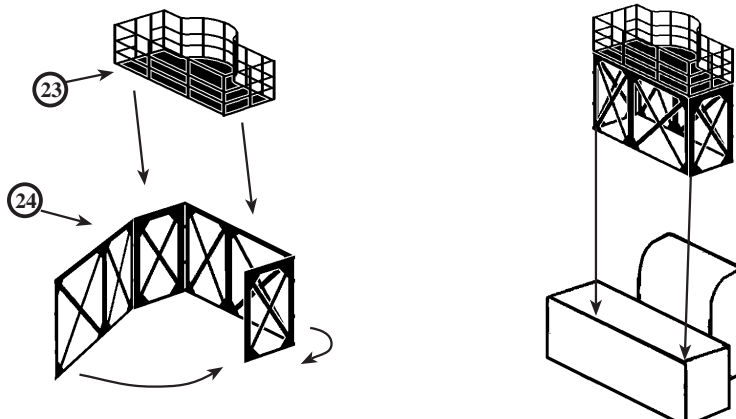
Alternative Aft Superstructure

This assembly replaces the moulded aft superstructure on the kit completely, giving a later version of the ship after upgrading.



Fold the sides of the superstructure, etched part 44, around in steps of 90° so that they are parallel. Shape the deck section, etched part 43, as shown above and fit to the upper edges of the superstructure sides. Shape and fit the railings sections 54 and 55, to the edges of the upper deck level. Fit the railing section, etched part 46 across the rear edge of the lower deck level. Fit the later fit main mast centrally to the upper deck level, so that the rear feet are in line with the ladder opening in the railings. A circular gun director tub fits behind the main mast and will have to be scratch built from plastic tube with a bit of further research.

Auxiliary Conning Platform



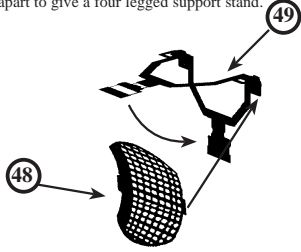
Fold the lattice support panels of etched part 24 around in steps of 90° until the end edges meet. Secure into place. Fold up the railing sections of the auxiliary conning platform etched part 23, to 90° then shape to fit the edges of the deck as shown.

Fit the auxiliary conning platform to the top edges of the lattice supports as shown above, then fit the assembly to the rectangular deckhouse amidships, after first removing the moulded plastic bulwarks. Fit the assembly so that the curved extension is central over the large ventilator trunking.

IFF and 277 Radar Antennas

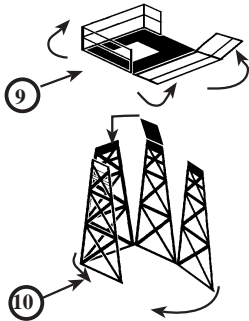


Fix the two sections of the IFF antenna, etched parts 37 together at the top, so that the cross bar is double thickness, then pull the legs apart to give a four legged support stand.



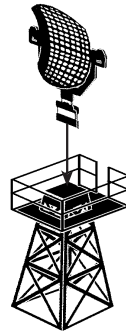
Fold the 277 antenna mounting yoke, etched part 49, over so that it is double thickness. Fit the lugs on the sides of the scanner, etched part 48, so that they fix in between the layers of the yoke at the fork ends. When secure glue the layers of the yoke together.

277 Radar Mast Assembly

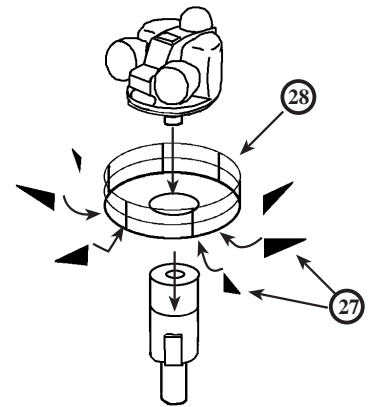


Fold up the railings on the top platform, etched part 9, to 90° then shape to fit the edges of the platform.

Fold the lattice panels of the 277 radar mast, etched part 10, around in steps of 90°. Bring the vertical edges in together and secure into place. Fit the platform so that the mast slides up through the square opening locating the inner edges of the platform along the first horizontal bar down from the top. Fit the 277 antenna assembly to the top of the mast as shown right.

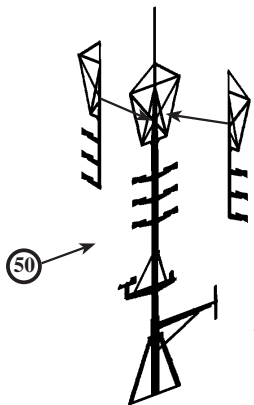


Mk 6 Gunnery Director Platform



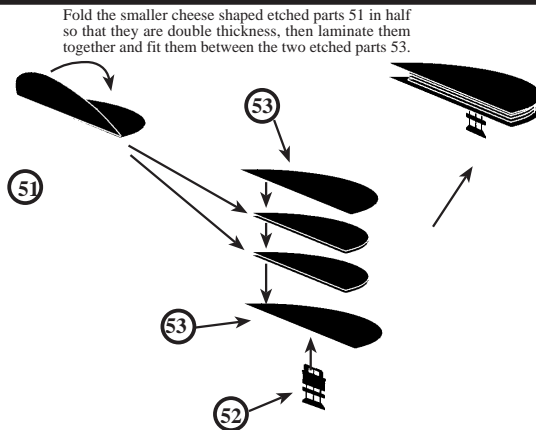
Remove the moulded plastic platform from around the kit part 7 and smooth the surface until you have a straight pillar as shown above. Fit the director platform, etched part 28, so that it passes down the pillar to approximately half way. Secure into place. Fit the angled support braces, etched parts 27 to the underside of the platform so that they locate onto the spanwise beams.

Fore Mast Top Array



To make the fore mast top antenna array, fit the two smaller sections centrally to the sides of the main antenna, so that they form a cross when viewed from above.

293 Radar Antenna Assembly

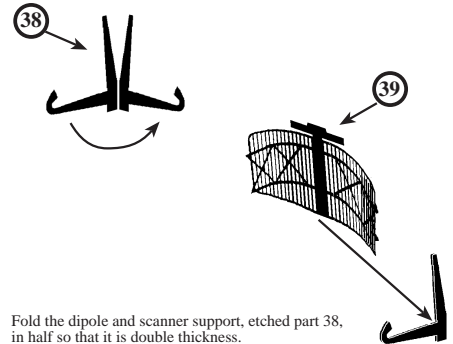


Fold the smaller cheese shaped etched parts 51 in half so that they are double thickness, then laminate them together and fit them between the two etched parts 53.

Ensure that the smaller cheese shaped parts are fitted centrally to the inner surfaces of etched parts 53. Fit etched part 52 to the etched recess on the underside of the lower surface.

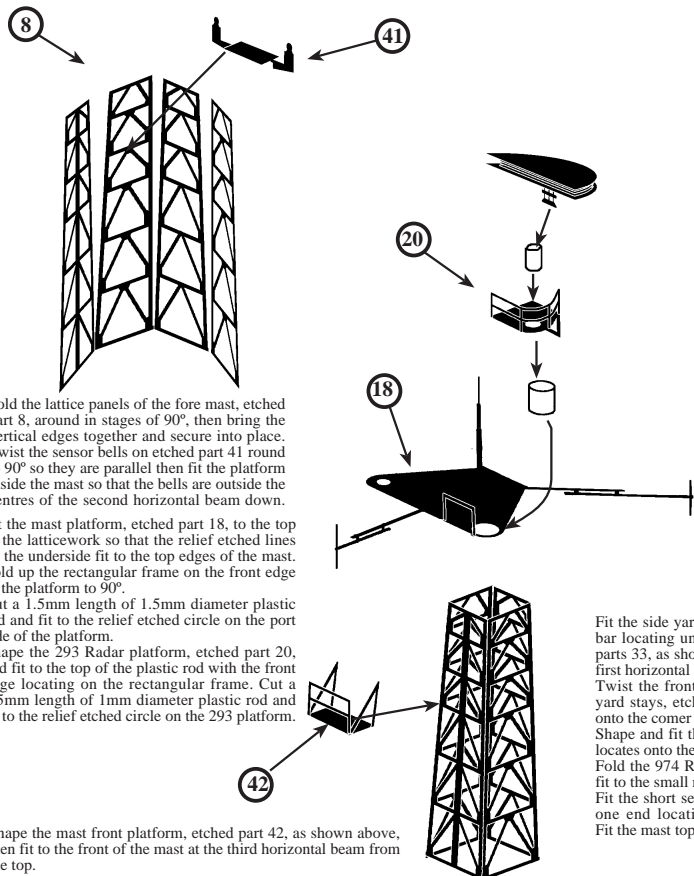
Hollandse-Signaal LW-02 Radar Antenna

This part has been provided for use by modellers converting the HMS Torquay kit to one of the South African or Australian Navy variants



Fold the dipole and scanner support, etched part 38, in half so that it is double thickness. Gently curve the radar scanner, etched part 39 and fit the central vertical bar to the vertical support bar on etched part 38.

Foremast Assembly



Fold the lattice panels of the fore mast, etched part 8, around in stages of 90°, then bring the vertical edges together and secure into place. Twist the sensor bells on etched part 41 round to 90° so they are parallel then fit the platform inside the mast so that the bells are outside the centres of the second horizontal beam down.

Fit the mast platform, etched part 18, to the top of the latticework so that the relief etched lines on the underside fit to the top edges of the mast. Fold up the rectangular frame on the front edge of the platform to 90°.

Cut a 1.5mm length of 1.5mm diameter plastic rod and fit to the relief etched circle on the port side of the platform.

Shape the 293 Radar platform, etched part 20, and fit to the top of the plastic rod with the front edge locating on the rectangular frame. Cut a 1.5mm length of 1mm diameter plastic rod and fit to the relief etched circle on the 293 platform.

Shape the mast front platform, etched part 42, as shown above, then fit to the front of the mast at the third horizontal beam from the top.

Fit the side yardarms centrally to the sides of the mast with the upper bar locating under the top platform. Shape the yardarm stays etched parts 33, as shown, then fit so that the inner cross beam locates on the first horizontal beam down from the top of the mast.

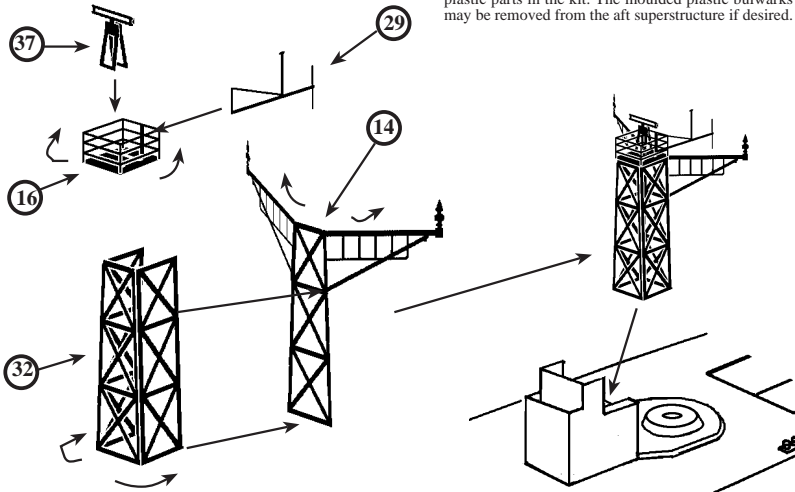
Twist the front and rear quarter yard around to 90° then fit the rear yard stays, etched parts 33, so that the 'V' shaped inner end locates onto the corner of the mast.

Shape and fit the railing section 12, so that the end of the shorter run locates onto the upright on the 293 platform.

Fold the 974 Radar antenna in half so that it is double thickness then fit to the small relief etched circle on the starboard side of the platform. Fit the short section of railing onto the port side of the platform with one end locating on the inner upright of the 293 radar platform. Fit the mast top antenna array centrally to the rear of the mast platform.

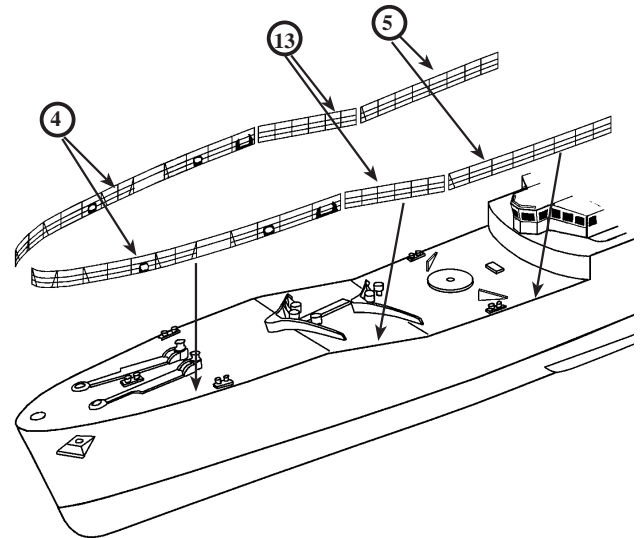
Early Main Mast Assembly

This mast assembly is a direct replacement for the plastic parts in the kit. The moulded plastic bulwarks may be removed from the aft superstructure if desired.



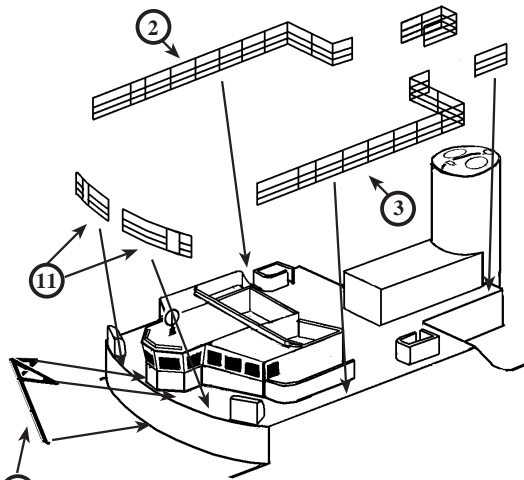
Fold the main mast lattice panels, etched part 32, around in 90° stages to form a horseshoe shape when viewed from above. Bring the vertical edges together and secure into place. Fit the vertical edges on the mast lattice, etched part 14, to the open edges on the main mast lattice. Angle the yardarms rearwards slightly as shown. Fold up the railings on the top platform, etched part 16, to 90° and secure into place. Fit the top platform to the top of the lattice mast as shown above. Fit the rear yardarm, etched part 29, to the vertical bar on the rear set of railings on the top platform. Fit the IFF antenna, etched part 37 to the centre of the top platform.

Fore Deck Railing Location



Shape and fit the railings sections, etched parts 4, 5 and 13 to the edges of the fore deck as shown above. If the Jack Staff is fitted, the railings at the bow will attach to the base of the pole.

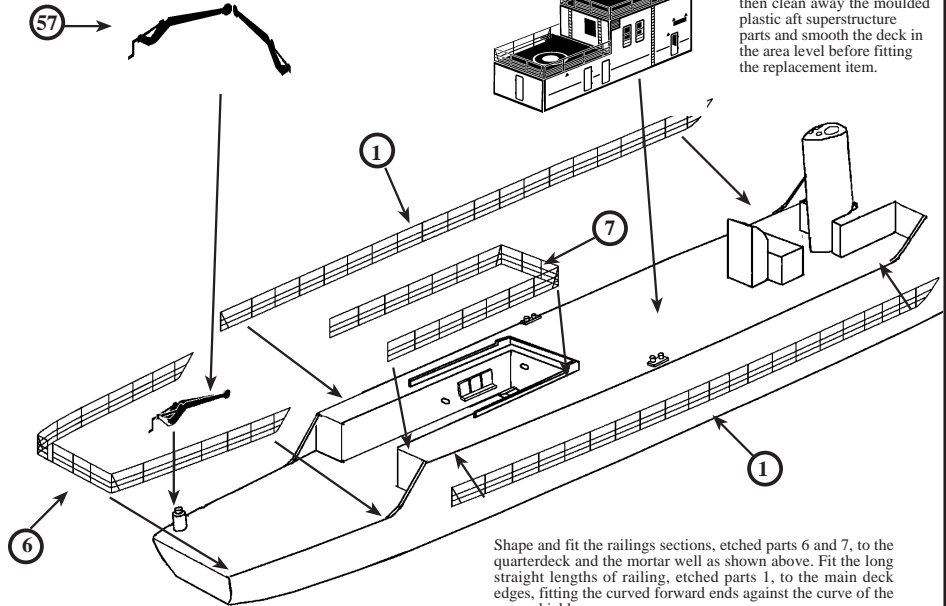
Forward Superstructure Railing Location



Shape and fit the railings section 2 to the starboard side of the superstructure as shown above. Note that there is meant to be a gap between the forward and rear sections to allow access to the boats. Repeat with the railings section, etched part 3 on the port side. Fit the railings sections, etched parts 11, to the front of the superstructure deck. The railing on the starboard side is 0.5 mm longer than that on the port side. Fit inclined ladders to the openings in the forward sections of railing and also to the platform on the port side of the funnel.

Aft Deck Railing Location

Fold the paravane crane in half and secure into place. Fit the crane jib to the top of the moulded pintle on the port side of the stern.



If the alternative later aft superstructure is to be fitted, then clean away the moulded plastic aft superstructure parts and smooth the deck in the area level before fitting the replacement item.

Shape and fit the railings sections, etched parts 6 and 7, to the quarterdeck and the mortar well as shown above. Fit the long straight lengths of railing, etched parts 1, to the main deck edges, fitting the curved forward ends against the curve of the spray shields.

Other Instructions

- Inclined Ladders, etched parts 58, have been supplied for fitting to the deck step on each side of the mortar well, running down to the quarterdeck. Also there are a pair of ladders fitted to the front of the forward superstructure at the gaps in the railings. There is one more ladder fitted to the platform on the port side of the funnel running aft down onto the main deck. Stock lengths of vertical ladders, etched parts 59, have been supplied for fitting to masts, platforms and bulkheads as desired. Cut to the required length as necessary.
- Boat davits, etched parts 36, have been supplied to replace the plastic kit parts directly. Fold the etched parts in half so that they are double thickness with the relief etched detail outermost. Cut the falls at the base of the davit then pull them outwards. Fitting the boats to the davits can be done by drilling a hole right through the boat and passing the falls through until the boat sits in the davits at the correct level. The bottom end of the falls can then be secured back onto the base of the davit thus holding the boat into place.
- Anchor chain, etched parts 61, has been included in this set in sufficient lengths to allow for the ship to be modelled in a diorama at anchor. The anchor chain is passed through the hawse-pipes at the bow and secured to the surface at the desired angle.
- Searchlights, etched parts 60, are fitted into place in the small enclosures on each side of the forward superstructure just aft of the bridge.
- Signal Lamps, etched parts 47, can be fitted to the bridge wing bulwarks. The Searchlights and Signal Lamps may be given a more 3D appearance by cutting a small length of plastic rod and fitting it to the rear of the lamp face.
- The DF Antenna, etched part 17 is included as an alternative part that could be fitted centrally to the top of the forward bulkhead of the later fit aft superstructure. The base of the antenna mast fits against the raised relief etched area.
- Torpedo loading davits, etched parts 22, have been provided to be fitted if the modeller chooses to fit the model with torpedo tubes along the edge of the main deck. These would have to be scratch built using lengths of plastic rod as a medium. Further research into the number and locations of these items would be necessary.